

Mebane On The Move 5K

Mebane, NC

Measured by: Eric Gilchrist (6/29/14)
Eric_Gilchrist@unc.edu

LANE USAGE – Make sure turns are clearly marked/manned by course monitors

Start (See Detail) E Clay Street whole road, turn Right onto N Wilba Rd to W Carr Street, whole road, turn Left on W Carr St to Forest Lake Dr, whole road, turn Left on Forest Lake Dr to West Lake Trail whole road, turn Right on West Lake Trail to Mebane Rogers Rd (W Stagecoach Rd) whole road, turn Right on Mebane Rogers Rd to N Carr St right lane only.
turn Right on N Carr St to Woodlawn Dr, whole road.
turn Left on Woodlawn (stay left) to Neal St, then veer Left on Neal, whole road (VIEW OBSTRUCTED!).
turn Right on N Wilba Rd to W Crawford St, whole road.
turn Left on W Crawford St to N 2nd St, whole road, turn Right on N 2nd St to W Ruffin St, whole road, turn Right on N 4th St, whole road.
turn Right on N 4th St (stay right), then turn Right on W Clay St to Finish Line (See Detail).

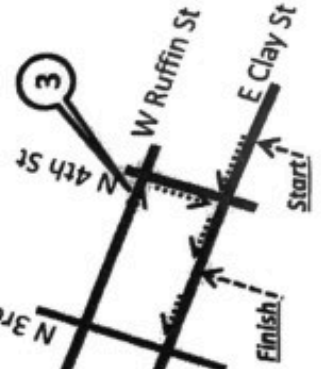
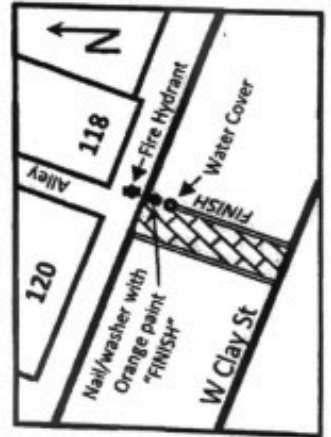
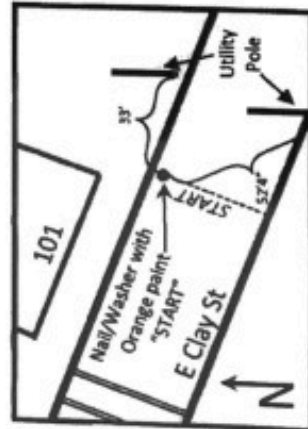
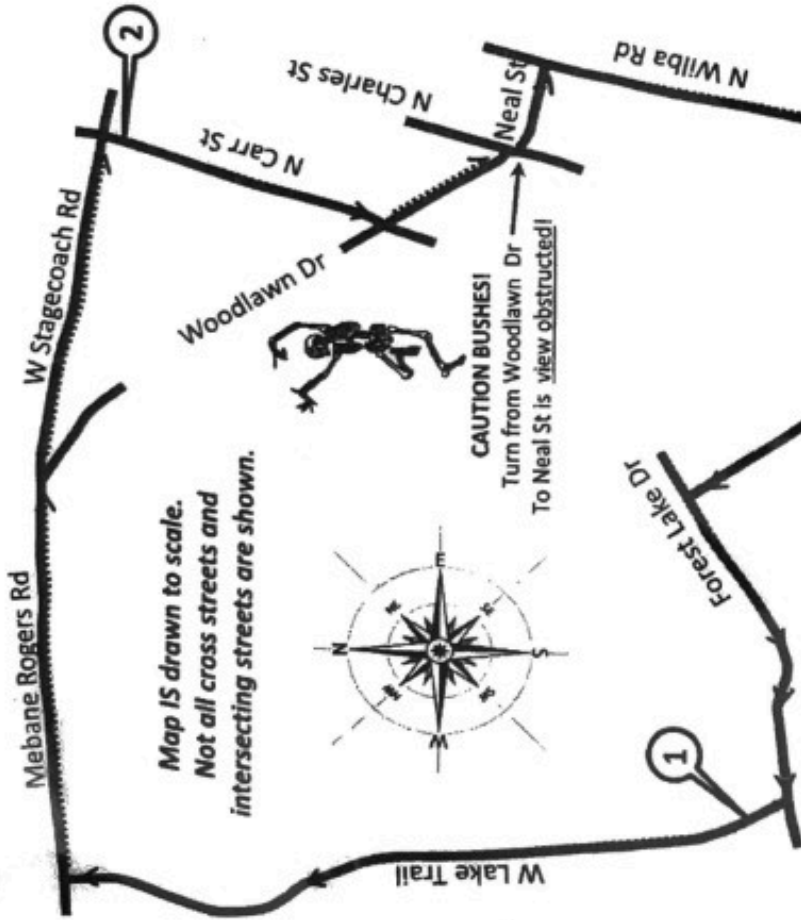
START: On North side of E Clay St, nail and washer with Orange Paint near curb of East corner of #101(see detail).

MILE 1: On West Lake Trail 16' past the first drive at #307, nail & washer with Orange Paint "1M".

MILE 2: On west side of N Carr St, 6' 7" past driveway at #615 and 14' 7" from utility pole adjacent on west side, nail & washer with Orange Paint "2M".

MILE 3: On south side of Ruffin St, 63' before the intersection of N 4th St, nail & washer with Orange Paint "3M".

FINISH: On north side of W Clay St at crosswalk between N 4th St and N 3rd St, nail & washer with Orange Paint "Finish" Between fire hydrant and small water access cover (see detail).



USATF Certificate # NC14096DF
Effective Jul 18, 2014 to Dec 31, 2024